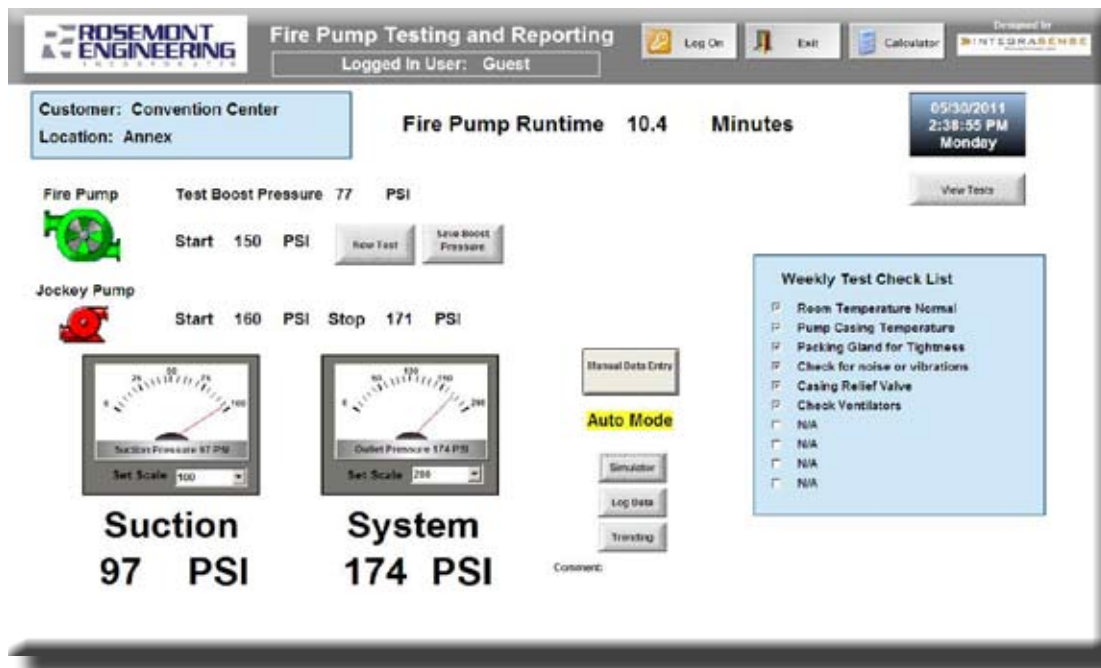


We have changed the way to test your *Fire Pump!*
Introducing... the *GATEWAY PORTABLE TEST KIT!*



Gateway Laptop Test Screen

Common Pitfalls:

- Broken or stuck pressure gauges
- Difficult to read handwritten logs
- Incomplete checklist items
- Misplaced reports
- Lack of verification
- Inconsistent testing

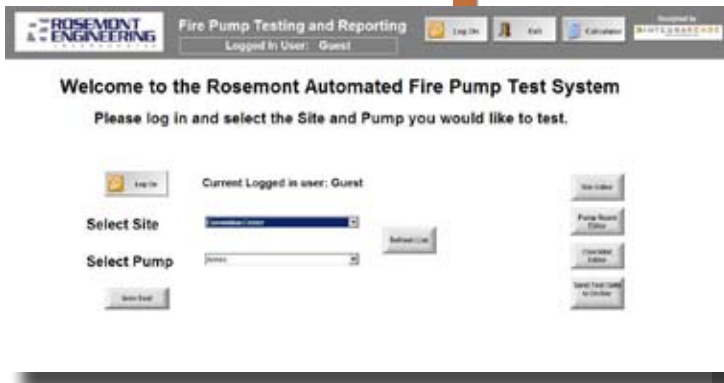
What you get:

- *Portable Test Kit with Transducers*
- *Laptop Computer with Fire Pump Test Software*

Cloud Control -The Fire Pump Gateway uplinks to *IntegraSense-OnSite*; a web-hosted database where your fire pump test data is securely stored. Your customized website will display your test results in an easy to read format and email them to you for permanent record keeping



Date	Site	Pump	Pressure	FP Start	Jockey Start	Jockey Stop	Event	User
05/18/2011 12:45:30.783	Deith Home	North Dkly	93.8	159	160	173	190	Mike
05/26/2011 16:44:58.155	Comcast/C... Annex		93.3	148	158	173	75	Guest
05/26/2011 14:47:53.158	Acme Publish...	Basement	93.1	149	158	173	34	Guest

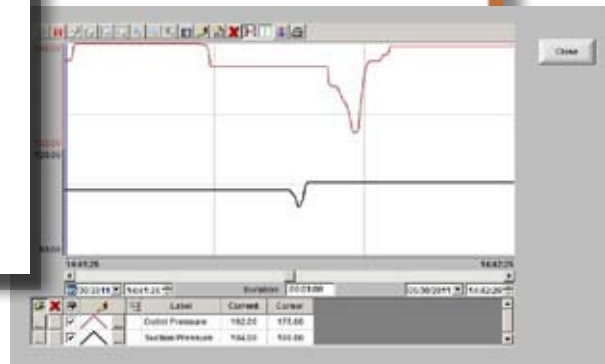


Fire Pump Testing and Reporting
 Logged in User: Guest
 Welcome to the Rosemont Automated Fire Pump Test System
 Please log in and select the Site and Pump you would like to test.

Current Logged in user: Guest

Select Site: [Dropdown menu]
 Select Pump: [Dropdown menu]

Buttons: Log On, Exit, Cancel, New Test, Print Report, Test Log, Test Log (PDF), Test Log (Excel)



Key Features Include ...

- **Pressure transducers to measure suction and system pressures**
- **Logs fire pump and jockey pump PSI setpoints at start event**
- **Automatic capture of fire pump test duration**
- **Emailed test report**
- **Email alert if test is not performed within specified timeframe**
- **Logging of pressure history with on-screen charting**
- **Allows standardized testing of multiple pump rooms**

Distributed in New England by:



Portability!

OnSite can be viewed on the iPad or on a web enabled cell phone such as the iPhone or Droid.